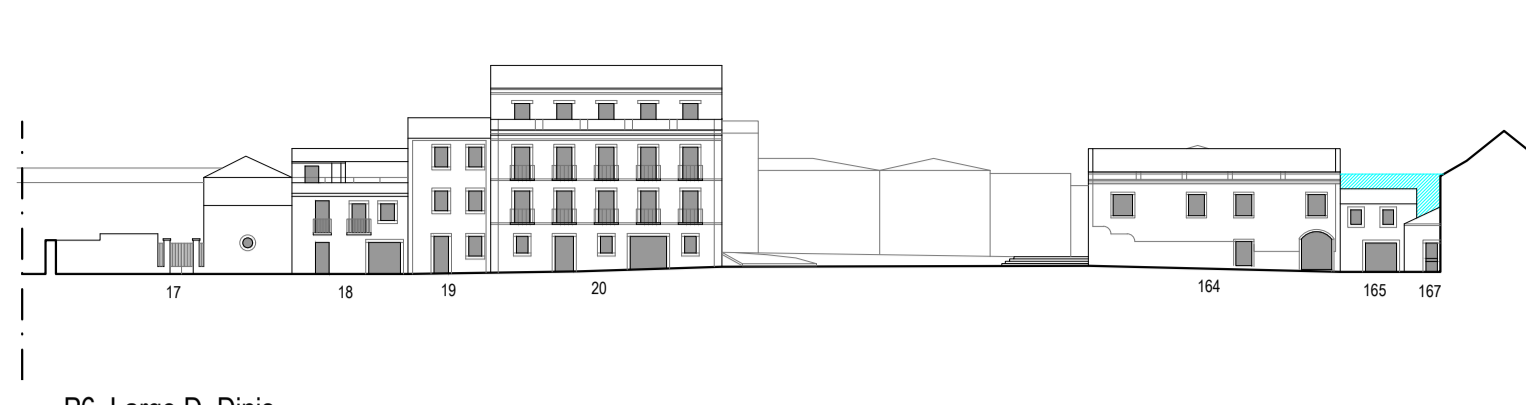


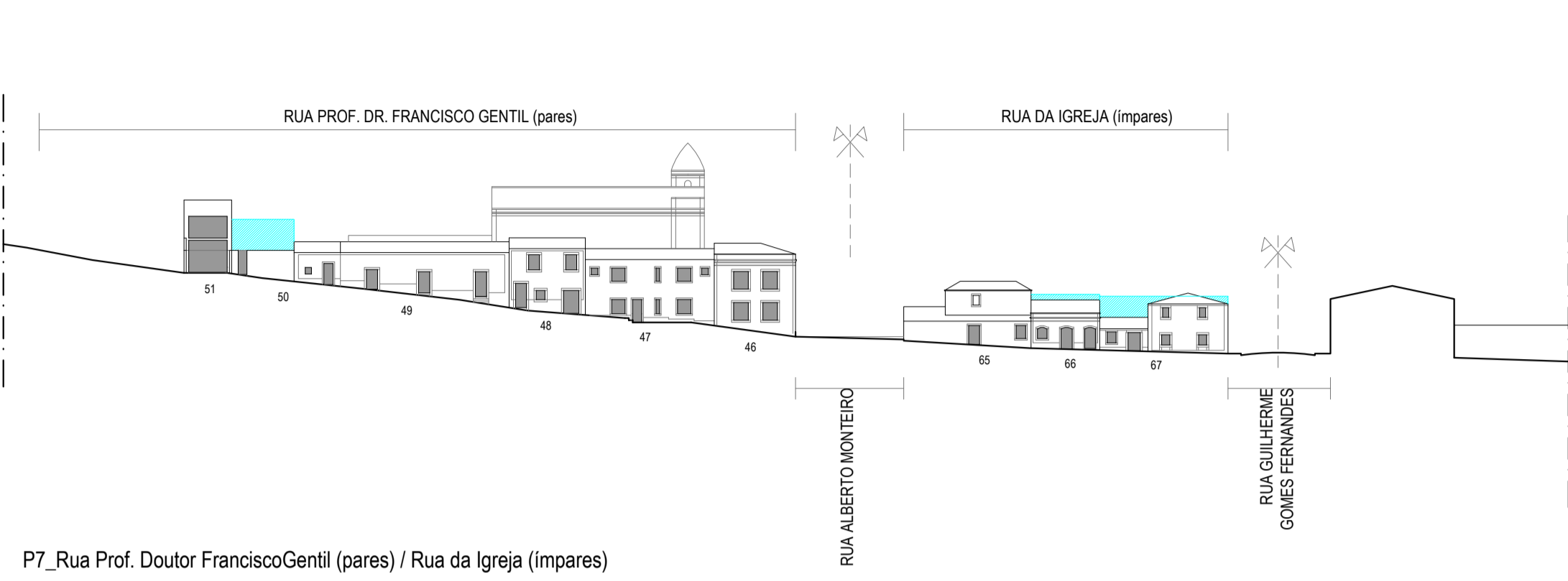
P5_Largo D. Dinis



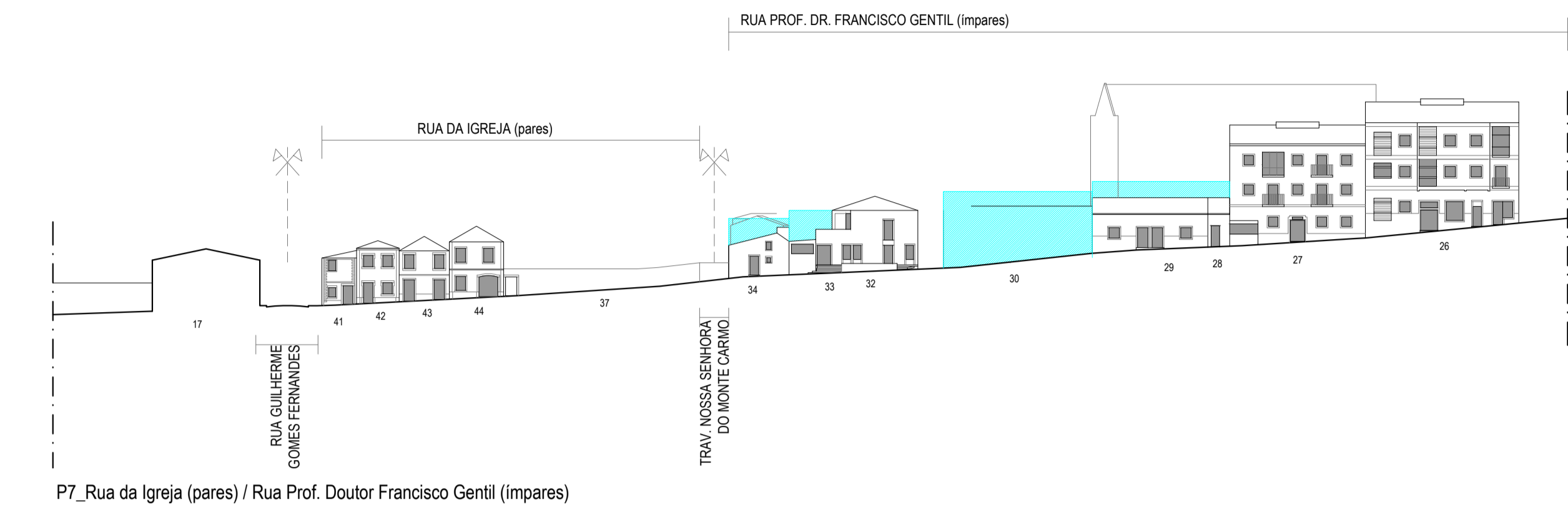
P6_Largo D. Dinis



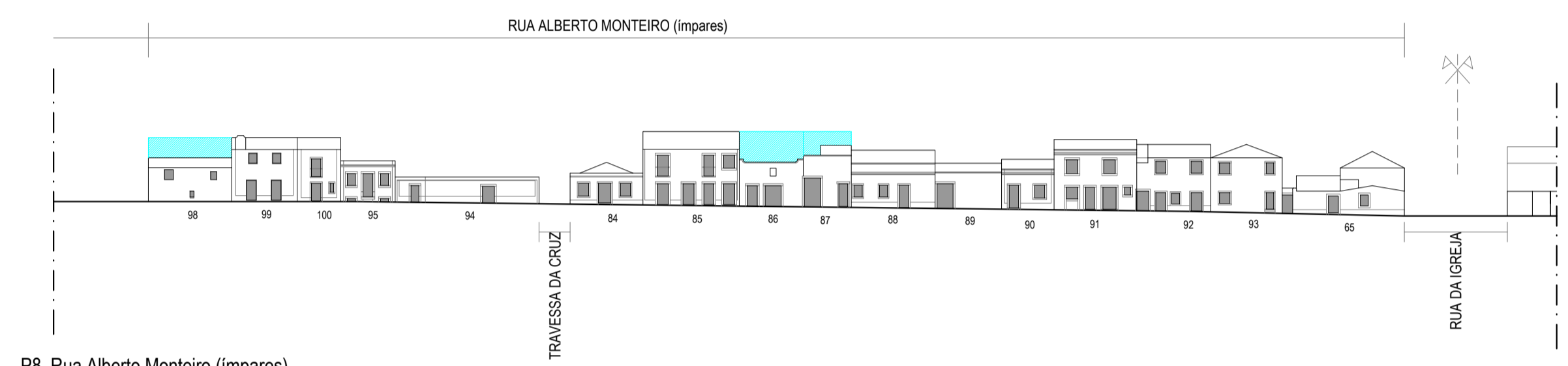
P7_Rua Prof. Doutor Francisco Gentil (pares) / Rua da Igreja (ímpares)



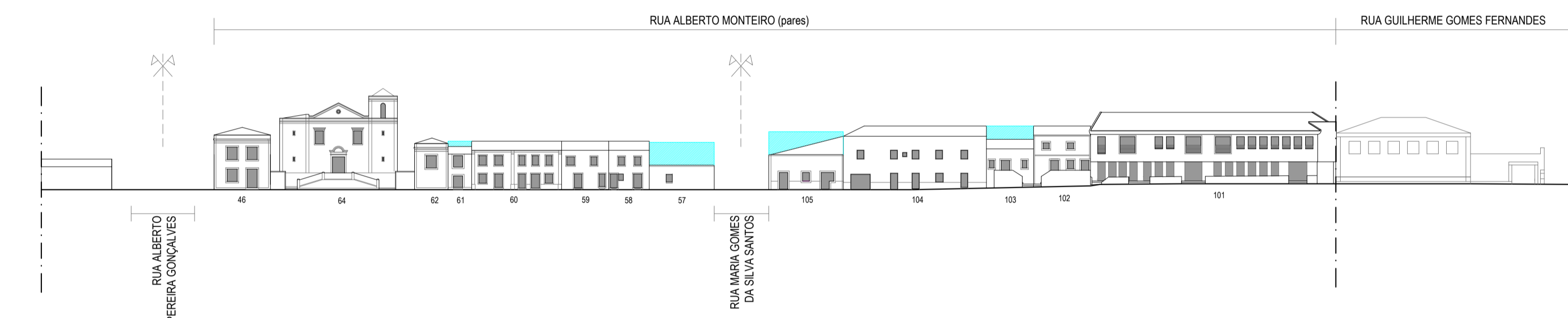
P7_Rua da Igreja (pares) / Rua Prof. Doutor Francisco Gentil (ímpares)



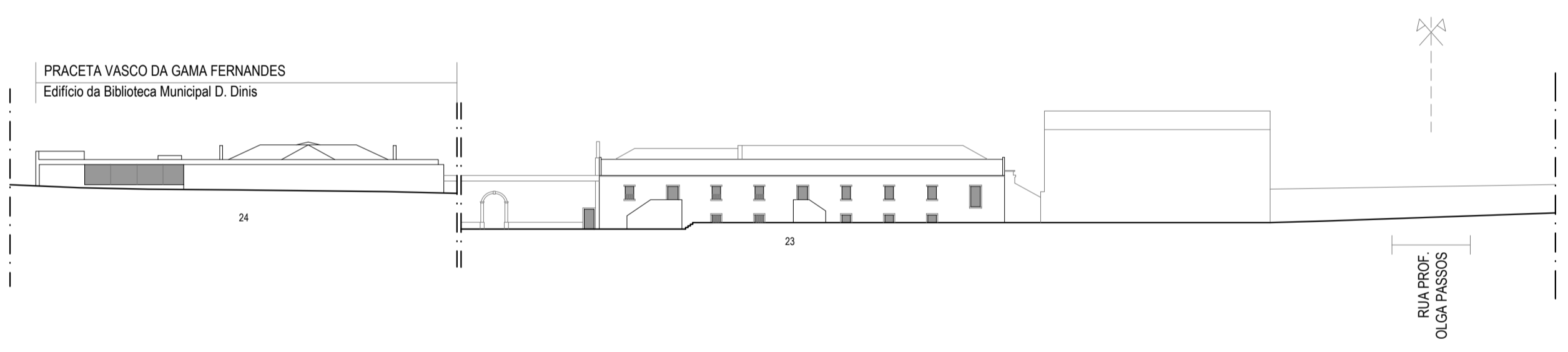
P8_Rua Alberto Monteiro (ímpares)



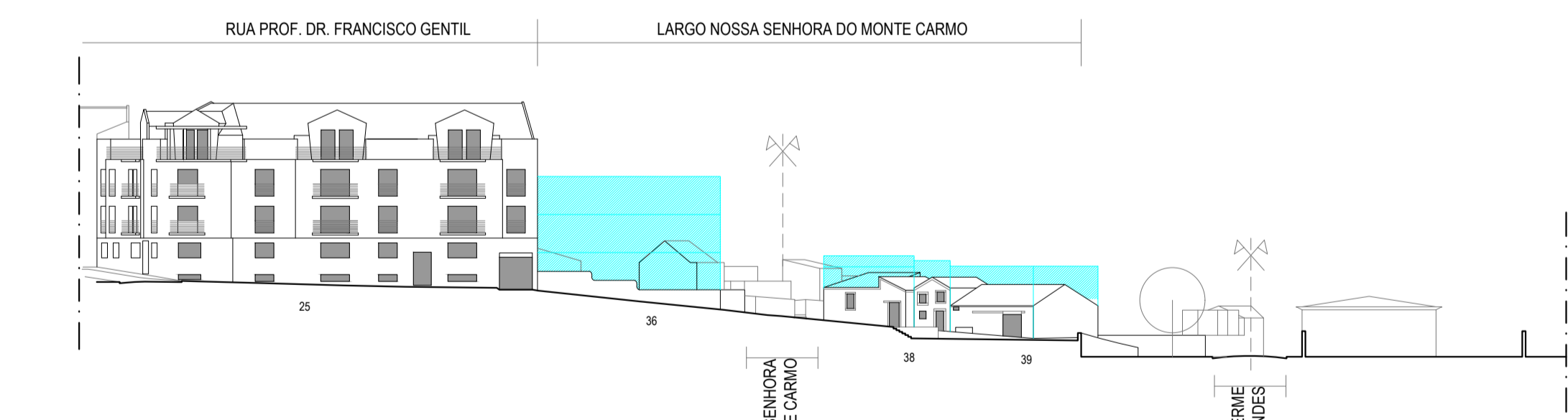
P8_Rua Alberto Monteiro (pares)



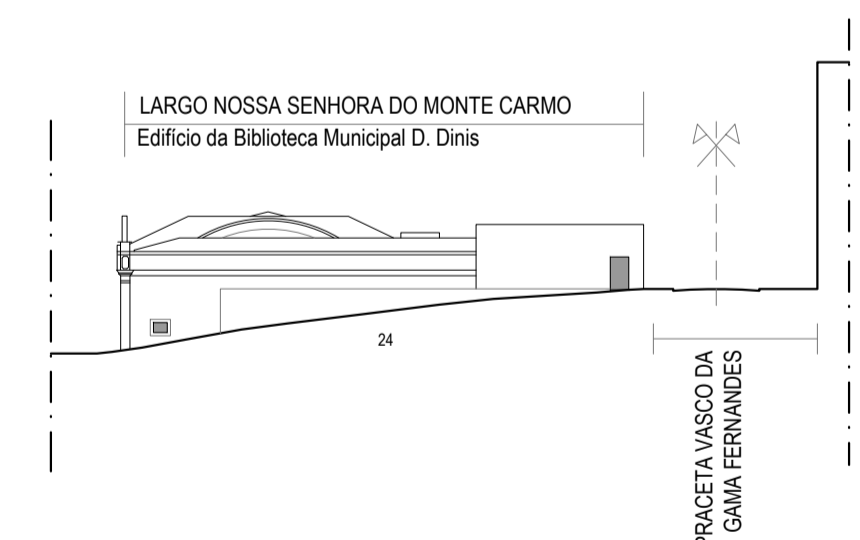
P9_Praceta Vasco da Gama Fernandes / Impasse atrás da Rua Guilherme Gomes Fernandes



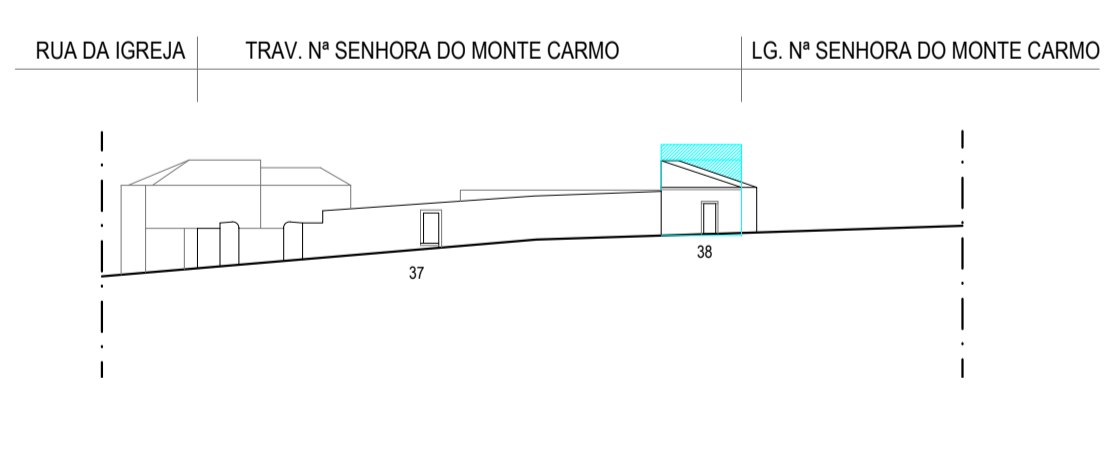
P10_Rua Prof. Doutor Francisco Gentil/Largo Nossa Senhora do Monte Carmo



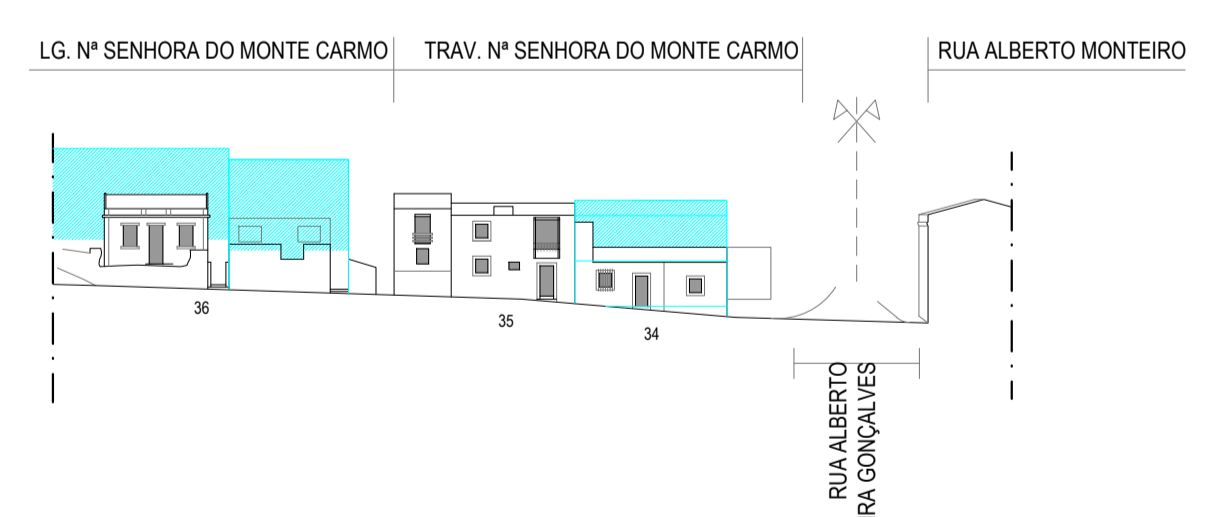
P11_Largo Nossa Senhora do Monte Carmo (Biblioteca)



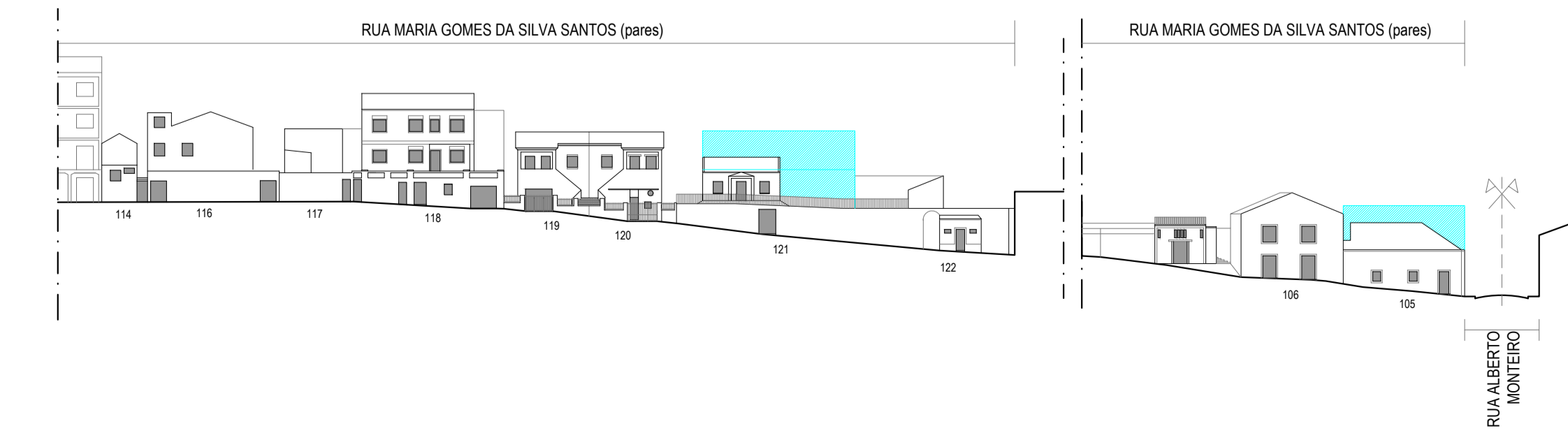
P12_Travessa de Nossa Senhora do Monte Carmo (ímpares)



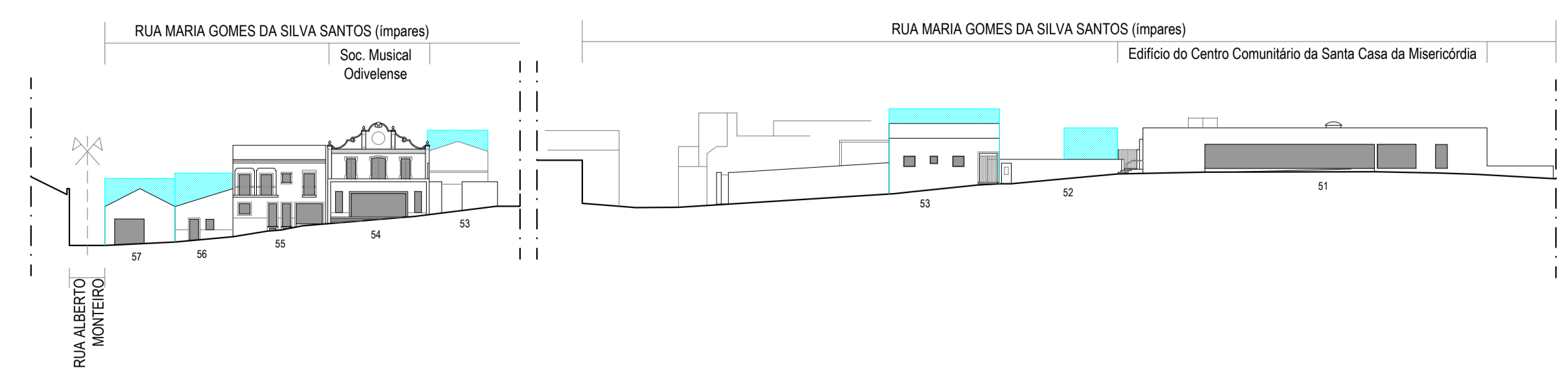
P12_Travessa de Nossa Senhora do Monte Carmo (pares)



P13_Rua Maria Gomes da Silva Santos (pares)



P13_Rua Maria Gomes da Silva Santos (ímpares)



PPCH_Odivelas

setembro 2018

4ª fase
Retificações à Proposta de Plano

Alçados (2/3)

